



TO LET

Office Unit

1,996 sq.ft

(185.4 sq.m)

First Floor Office, Telegraph House, High Street, Sheffield, South Yorkshire, S1 2AN

- Prime location in the centre of Sheffield
- Opposite Fargate, the pedestrianised retail heart of the city
- Modern Office Suite within a Listed Building
- Ground Floor entrance
- New lift access

M **M[®]Core**
LCP UK

01384
400123

lcpgroup.co.uk



First Floor Office, Telegraph House, High Street, Sheffield, South Yorkshire, S1 2AN

Areas (Approx. Gross Internal)

Office Space	1,996 sq.ft	(185.4 sq.m)
--------------	-------------	--------------

Description

A landmark Victorian building in the heart of a bustling city centre. Grade II Listed Telegraph House, which was originally home to the Sheffield Telegraph newspaper. It is located on Sheffield's High Street and now features retail units on street level with commercial offices and apartments above.

We have one suite remaining of 1,996 sq.ft on the first floor. The suite benefits from air conditioning, LED lighting, a kitchen, demised WC's and a door access system. The suite is arranged as a number of private offices and an open plan area. The space is in need of a refurb and an incoming tenant can have an input into this. The common areas of the building have recently been refurbished.

Rent

£10.00 per sq.ft, per annum exclusive

Rateable Value

Rateable Value £12,500 pa. Rates payable will be lower - please call to discuss.

Service Charge

A service charge will be levied for the maintenance of common areas.

Insurance

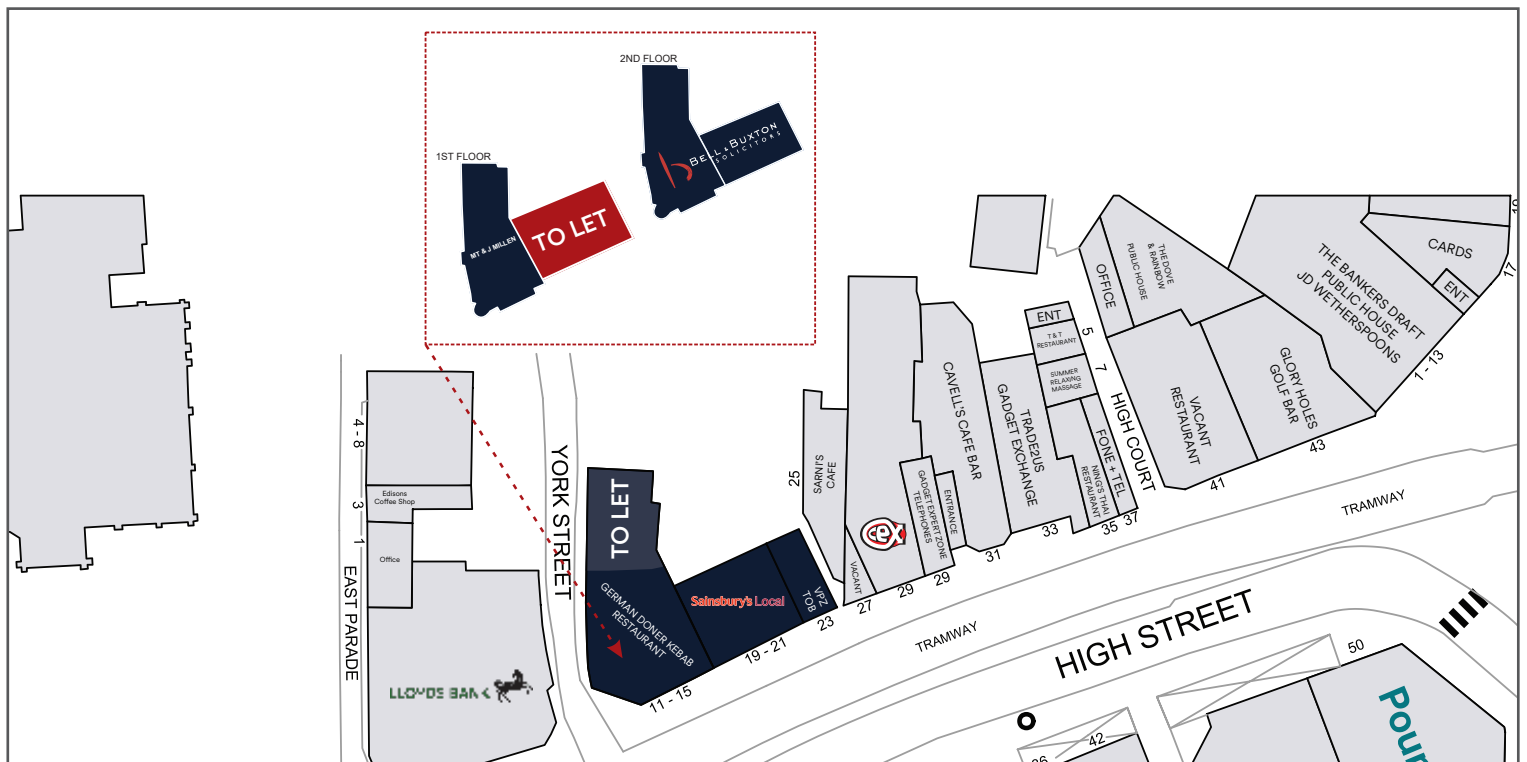
The Landlord will insure the premises the premiums to be recovered from the tenant.

Energy Performance

Further information available upon request.

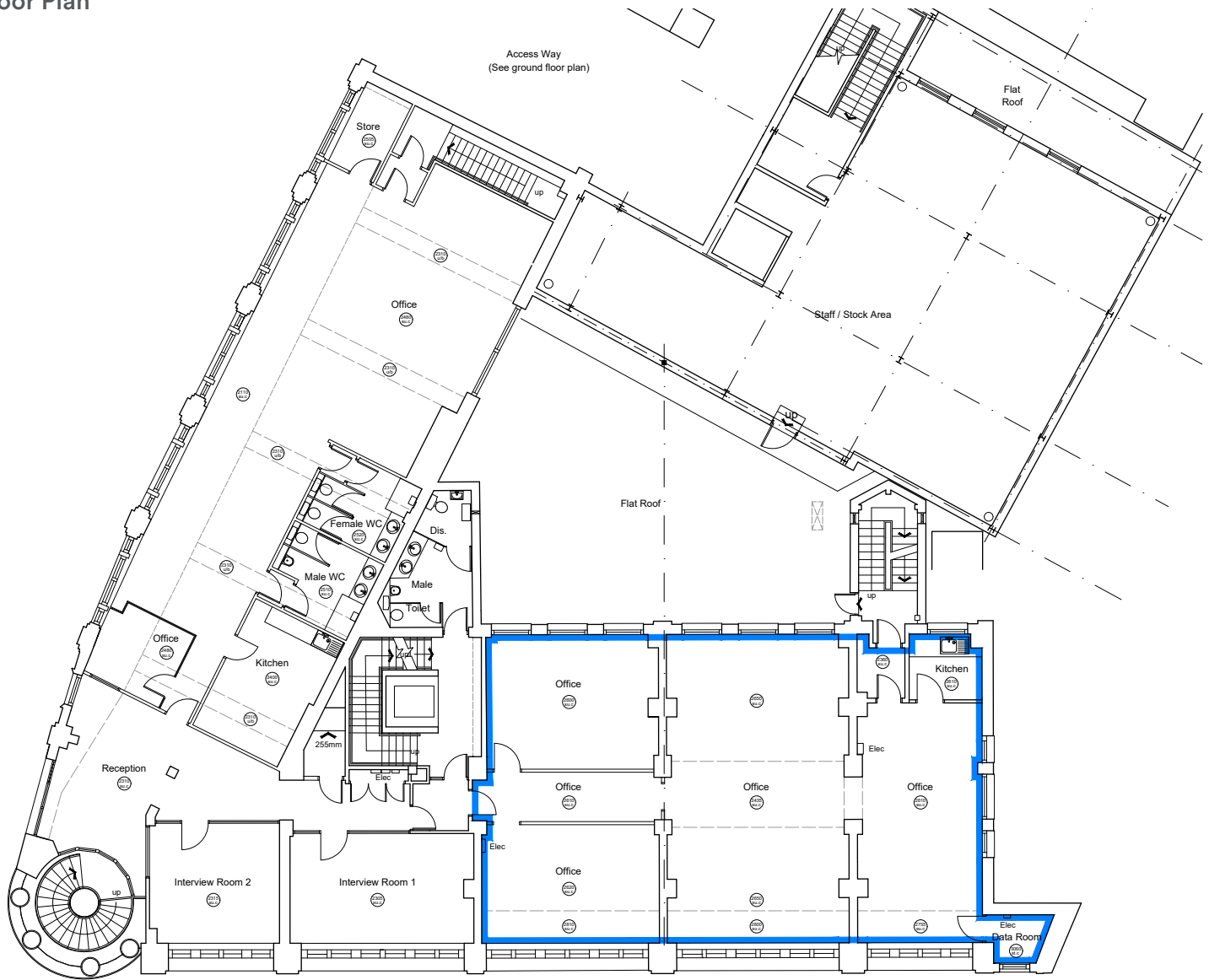
Legal and Surveyor Costs

Each party will be responsible for their own legal and surveyors costs incurred with the proposed transaction.



First Floor Office, Telegraph House, High Street, Sheffield, South Yorkshire, S1 2AN

Floor Plan



First Floor Plan - 2108 sqft.

Viewing

Strictly via prior appointment with the appointed agent

 **Crosthwaite**
COMMERCIAL
T 0114 272 3888
www.crosthwaitecommercial.com

Tom Shelton
07738 335 482
tom@crosthwaitecommercial.com

Chloe Bennett
07538 412 671
chloe@crosthwaitecommercial.com

 **M Core**
LCP UK
01384 400123

lcpgroup.co.uk

Simon Eatough
07771 764 148
seatough@lcpproperties.co.uk

MISREPRESENTATION ACT, 1967 London & Cambridge Properties Limited (Company Number 02895002) the registered office of which is at LCP House, Pensnett Estate, Kingswinford, West Midlands DY6 7NA its subsidiaries (as defined in section 1156 of the Companies Act 2006) associated companies and employees ("we") give notice that: Whilst these particulars are believed to be correct no guarantee or warranty is given, or implied therein, nor do they form any part of a contract. [We do our best to ensure all information in this brochure is accurate. If you find any inaccurate information, please let us know and where appropriate, we will correct it.] We make no representation that information is accurate and up to date or complete. We accept no liability for any loss or damage caused by inaccurate information. [This brochure gives a large amount of [statistical] information and there will inevitably be errors in it]. Intending purchasers or tenants should not rely on the particulars in this brochure as statements or representations of fact but should satisfy themselves by inspection or otherwise as to the correctness of each of them. We provide this brochure free of charge and on the basis of no liability for the information given. In no event shall we be liable to you for any direct or indirect of fact but should satisfy themselves by inspection or otherwise as to the correctness of each of them. All terms implied by law are excluded to the fullest extent permitted by law. No person in our employment has any authority to make or give any representation or warranty whatsoever in relation to the property. SUBJECT TO CONTRACT. We recommend that legal advice is taken on all documentation before entering into a contract. You should be aware that the Code of Practice on Commercial Leases in England and Wales strongly recommends you seek professional advice from a qualified surveyor, solicitor or licensed conveyancer before agreeing or signing a business tenancy agreement. The Code is available through professional institutions and trade associations or through the website: <https://www.rics.org/uk/upholding-professional-standards/sector-standards/real-estate/code-for-leasing-business-premises-1st-edition/>. LCP's privacy notices that apply to its use of your personal information are at www.lcpgroup.co.uk